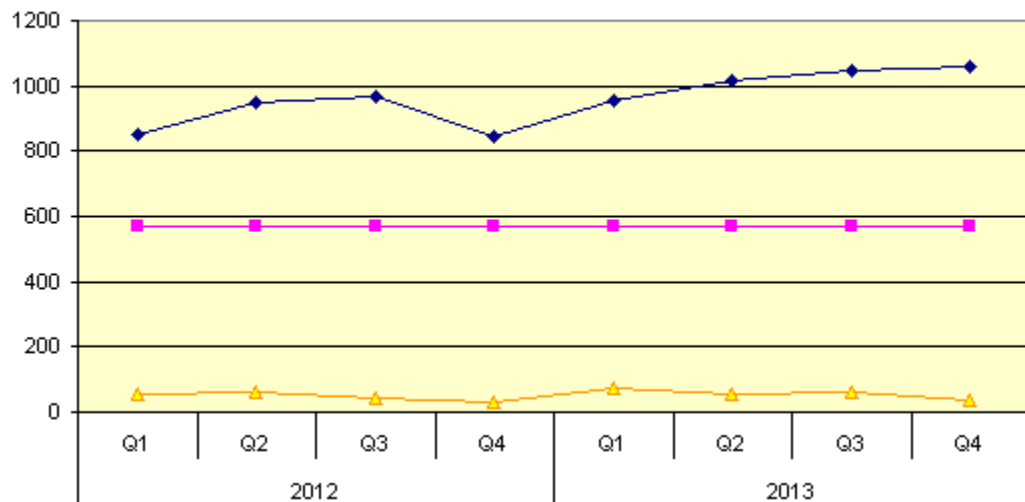


Southwark Mental Health Liaison Team Activity at Kings College Hospital Emergency Department 2012 - 2013

Assessments, Targets, Mental Health 6 hour Breaches



Patients Known or Unknown



	2012				2013			
	Q1	Q2	Q3	Q4	Q1	Q2	Q3	Q4
Assmnts	854	948	968	847	954	1019	1044	1058
Target	567	567	567	567	567	567	567	567
MH 6 Hour Breaches	57	64	41	32	72	53	63	35
Breaches as %	6.7%	6.7%	4.2%	3.8%	7.5%	5.2%	6.0%	3.3%